



# Continental-scale suppression of an invasive pest by a host-specific parasitoid underlines both environmental and economic benefits of arthropod biological control

Kris A.G. Wyckhuys<sup>1,2,3,4,19</sup>, Prapit Wongtiem<sup>5</sup>, Aunu Rauf<sup>6</sup>, Anchana Thancharoen<sup>7</sup>, George E. Heimpel<sup>8</sup>, Nhung T.T. Le<sup>9</sup>, Muhammad Zainal Fanani<sup>6</sup>, Geoff M. Gurr<sup>1,10</sup>, Jonathan G. Lundgren<sup>11</sup>, Dharani D. Burra<sup>12</sup>, Leo K. Palao<sup>12</sup>, Glenn Hyman<sup>13</sup>, Ignazio Graziosi<sup>14,15</sup>, Vi X. Le<sup>9</sup>, Matthew J.W. Cock<sup>16</sup>, Teja Tscharntke<sup>17</sup>, Steve D. Wratten<sup>1,18</sup>, Liem V. Nguyen<sup>9</sup>, Minsheng You<sup>1</sup>, Yanhui Lu<sup>19</sup>, Johannes W. Ketelaar<sup>20</sup>, Georg Goergen<sup>21</sup> and Peter Neuenschwander<sup>21</sup>

<sup>1</sup>Institute of Applied Ecology, Fujian Agriculture & Forestry University, Fuzhou, Fujian, China

<sup>2</sup>School of Biological Sciences, University of Queensland, Brisbane, Australia

<sup>3</sup>Institute of Insect Sciences, Zhejiang University, Hangzhou, China

<sup>4</sup>CGIAR Program on Roots, Tubers and Banana, International Center for Tropical Agriculture, Hanoi, Vietnam

<sup>5</sup>Rayong Field Crops Research Center, Thai Department of Agriculture, Rayong, Thailand

<sup>6</sup>Bogor Agricultural University, Bogor, Indonesia

<sup>7</sup>Kasetsart University, Bangkok, Thailand

<sup>8</sup>University of Minnesota, Minneapolis, United States of America

<sup>9</sup>Plant Protection Research Institute, Hanoi, Vietnam

<sup>10</sup>Charles Sturt University, Orange, Australia

<sup>11</sup>Ecdysis Foundation, Estelline, United States of America

<sup>12</sup>International Center for Tropical Agriculture CIAT, Hanoi, Vietnam

<sup>13</sup>International Center for Tropical Agriculture CIAT, Cali, Colombia

<sup>14</sup>University of Kentucky, Lexington, United States of America

<sup>15</sup>World Agroforestry Center ICRAF, Nairobi, Kenya

<sup>16</sup>CABI, Wallingford, United Kingdom

<sup>17</sup>University of Goettingen, Goettingen, Germany

<sup>18</sup>Lincoln University, Christchurch, New Zealand

<sup>19</sup>Institute of Plant Protection, China Academy of Agricultural Sciences, Beijing, China

<sup>20</sup>Food and Agriculture Organization, Bangkok, Thailand

<sup>21</sup>International Institute of Tropical Agriculture, Cotonou, Benin

Submitted 13 June 2018

Accepted 20 September 2018

Published 19 October 2018

Corresponding author

Kris A.G. Wyckhuys,  
kagwyckhuys@gmail.com

Academic editor

Jose Montoya

Additional Information and  
Declarations can be found on  
page 17

DOI 10.7717/peerj.5796

© Copyright  
2018 Wyckhuys et al.

Distributed under  
Creative Commons CC-BY 4.0

OPEN ACCESS

## ABSTRACT

Biological control, a globally-important ecosystem service, can provide long-term and broad-scale suppression of invasive pests, weeds and pathogens in natural, urban and agricultural environments. Following (few) historic cases that led to sizeable environmental up-sets, the discipline of arthropod biological control has—over the past decades—evolved and matured. Now, by deliberately taking into account the ecological risks associated with the planned introduction of insect natural enemies, immense environmental and societal benefits can be gained. In this study, we document

and analyze a successful case of biological control against the cassava mealybug, *Phenacoccus manihoti* (Hemiptera: Pseudococcidae) which invaded Southeast Asia in 2008, where it caused substantial crop losses and triggered two- to three-fold surges in agricultural commodity prices. In 2009, the host-specific parasitoid *Anagyrus lopezi* (Hymenoptera: Encyrtidae) was released in Thailand and subsequently introduced into neighboring Asian countries. Drawing upon continental-scale insect surveys, multi-year population studies and (field-level) experimental assays, we show how *A. lopezi* attained intermediate to high parasitism rates across diverse agro-ecological contexts. Driving mealybug populations below non-damaging levels over a broad geographical area, *A. lopezi* allowed yield recoveries up to 10.0 t/ha and provided biological control services worth several hundred dollars per ha (at local farm-gate prices) in Asia's four-million ha cassava crop. Our work provides lessons to invasion science and crop protection worldwide. Furthermore, it accentuates the importance of scientifically-guided biological control for insect pest management, and highlights its potentially large socio-economic benefits to agricultural sustainability in the face of a debilitating invasive pest. In times of unrelenting insect invasions, surging pesticide use and accelerating biodiversity loss across the globe, this study demonstrates how biological control—as a pure public good endeavor—constitutes a powerful, cost-effective and environmentally-responsible solution for invasive species mitigation.

**Subjects** Agricultural Science, Biodiversity, Ecology, Ecosystem Science, Entomology

**Keywords** Ecosystem services, Ecological intensification, Insect biological control, Tropical agro-ecosystems, Sustainable agriculture, Invasion biology, Ecological safety, Insect parasitism

## INTRODUCTION

Biological control is a globally-important ecosystem service, and plays a pivotal role in the functioning and broader resilience of agricultural and natural ecosystems alike (*Costanza et al., 1997*). For US agriculture alone, insect-mediated biological control is conservatively valued at \$4.5–17 billion per year, and a diverse community of natural enemies helps alleviate pressures from herbivores and other crop antagonists (*Losey & Vaughan, 2006*). However, rapid depletion of animal populations and progressive ecosystem simplification compromise the strength and stability of this ecosystem service (*Oliver et al., 2015; Hallmann et al., 2017*). In tropical terrestrial ecosystems with inherently high levels of biodiversity, these trends might be even more pronounced yet routinely remain un-documented due to e.g., an overall lack of sufficient funds, scientific interest and well-trained ecologists (*Melo et al., 2013; Barnes et al., 2014*).

Across the globe, arthropod pests reduce agricultural productivity by 10–16% and constitute key impediments to food security and (indirectly) poverty alleviation (*Oerke, 2006; Bebbler, Ramotowski & Gurr, 2013*). Though native pests continue to pose major problems for the world's agriculture, non-native species are of increasing significance as a result of trade globalization and human movement (*Bradshaw et al., 2016; Paine et al., 2016*). Importation biological control (IBC; also known as 'classical biological control'), or the judicious selection and subsequent introduction of a specialized natural enemy

from the pest's region of origin, has been repeatedly shown to effectively reduce invasive pest populations to less damaging levels (*Van Driesche, Hoddle & Center, 2008; Heimpel & Mills, 2017*). Particularly in the developing-world tropics, IBC can be a “silver bullet” option for destructive agricultural pests, being largely self-sustaining and requiring little or no stakeholder intervention (*Andrews, Bentley & Cave, 1992*). Since the late 1800s, more than 2,000 natural enemy species have been released against approximately 400 invasive pests worldwide, occasionally resulting in complete pest control but regularly causing limited impact on target pest populations (*Van Lenteren et al., 2006; Cock et al., 2016b*). Though economic impacts are not routinely assessed for IBC, levels of pest suppression and ensuing benefit:cost ratios can be exceptionally favorable (5:1 to >1,000:1) (*Heimpel & Mills, 2017; Gutierrez, Caltagirone & Meikle, 1999; Naranjo, Ellsworth & Frisvold, 2015*). Yet, IBC is marred with remarkably low rates of success (*Greathead & Greathead, 1992; Cock et al., 2016a*), and biological control as a whole is habitually undervalued or even avoided while it should be promoted (*Daily et al., 2009*). Furthermore, over the past three decades, IBC initiatives have been met with stringent regulations and a heightened emphasis on potential ecological risks or unintended side-effects (*Heimpel & Cock, 2018*). The latter was triggered by a provocative yet necessary account by *Howarth (1983)* and *Howarth (1991)*, built around misguided biological control releases that were conducted decades earlier, and in which the long-established paradigm of IBC as ‘ecologically-safe’ practice was challenged.

One well-recognized IBC program is the Africa-wide initiative targeting the invasive cassava mealybug, *Phenacoccus manihoti* (Hemiptera: Pseudococcidae), which led to a 50% yield recovery resulting in long-term economic benefits up to US \$20.2 billion as well as the likely avoidance of widespread famine without negative side effects (*Neuenschwander et al., 1989; Herren & Neuenschwander, 1991; Zeddies et al., 2001*). Key to the success of this program was the carefully-selected host-specific and environmentally-adaptable parasitoid *Anagyrus lopezi* (Hymenoptera: Encyrtidae), recovered in 1981 after foreign exploration from South America, and introduced into Nigeria soon thereafter. As *A. lopezi* is considered to be a specialist internal feeder on *P. manihoti*, no detrimental ecological impacts resulted from its continent-wide release (*Neuenschwander, 2001*). Following its devastating passage through Africa's cassava belt in the 1970s and 80s, *P. manihoti* was inadvertently introduced into Thailand in 2008, spread through mainland Southeast Asia, and made its appearance in Indonesia by 2010 (*Graziosi et al., 2016*). As cassava is grown on >4 million ha by an estimated 8 million farming families throughout tropical Asia, this pest had potential to cause massive socio-economic impacts. As part of an internationally-coordinated management campaign for *P. manihoti*, *A. lopezi* was promptly sourced from Benin, West Africa and 500 adult parasitoids were introduced into Thailand in 2009 (*Winotai et al., 2010*). Parasitoids were subsequently mass-reared by multiple Thai institutions, released across the country during 2010–2012 (some by airplane) and introduced into neighboring Laos, Cambodia (in 2011), Vietnam (in 2013) and Indonesia (in 2014) (*Wyckhuys, Rauf & Ketelaar, 2015*).

In this study, we characterized the degree to which *A. lopezi* has established in the highly-heterogeneous cassava cropping environments of Southeast Asia. Field research was

carried out over the course of 2014–2017 by various country teams, each pursuing different objectives as outlined below. We employed seasonal population surveys that extended from Myanmar’s Ayeyawaddy River delta to the uplands of Timor in eastern Indonesia, to quantify magnitude and spatial extent of parasitoid-induced *P. manihoti* population suppression (section i, ii). Furthermore, we employed well-established manipulative protocols to assess the effectiveness of *A. lopezi* and subsequent yield benefits of biological control (*DeBach & Huffaker, 1971; Van Lenteren, 1980; Luck, Shepard & Kenmore, 1988*) (section iii). Finally, we conducted an analysis of production statistics and cassava prices in one of Asia’s main cassava-growing countries (Thailand) over a time period spanning the 2008 *P. manihoti* invasion, the 2009 parasitoid introduction into Thailand and the subsequent (natural, and human-aided) continent-wide distribution of *A. lopezi* (section iv).

Our work uses original datasets to present a rare, continental-scale and multi-year assessment of IBC-mediated insect pest suppression, and the cascading trophic and socioeconomic effects on cassava yield loss reduction and commodity prices. We combine observational and manipulative studies to exemplify the benefits of *A. lopezi* as a biological control agent, and lay the basis for further econometric investigations. This study illustrates the value of an insect-driven ecosystem service to support agricultural sustainability, in the face of a potentially devastating invasive pest.

## MATERIALS & METHODS

### Multi-country pest & natural enemy survey

From early 2014 until late 2017, insect surveys were carried out in 601 cassava fields in Myanmar, Thailand, Lao PDR, Cambodia, Vietnam, southern China and Indonesia. Survey protocols are described in detail in *Graziosi et al. (2016)*. In brief, we selected older fields (i.e., 8–10 months of age) in the main cassava-growing areas of each country, with individual sites located at least 1 km apart. Five linear transects were randomly chosen per site, with ten plants (routinely spaced at 0.8–1.2 m) sampled in each transect. By doing so, a total of 50 plants per field were assessed for *P. manihoti* infestation and per-plant mealybug abundance. In-field identification of mealybugs was based on morphological characteristics such as coloration and presence or length of abdominal waxy filaments, while samples were also taken to the laboratory for identification by specialist taxonomists. Following transect walks we calculated average *P. manihoti* abundance (i.e., number of individuals per infested tip) and field-level incidence (i.e., proportion of *P. manihoti*-infested tips per field).

To assess local *A. lopezi* establishment and parasitism rates, we conducted dry-season sampling from 2014 to 2017 at sub-sets of mealybug-invaded sites in Thailand ( $n = 20$ ), Cambodia ( $n = 10, 15$ ), southern Vietnam ( $n = 20, 20, 6$ ) and Indonesia ( $n = 10, 9, 21$ ) (total  $n = 131$ ). Sampling consisted of collecting 20 mealybug-infested tips from local fields and transferring them to a laboratory to monitor subsequent parasitoid emergence (*Neuenschwander et al., 1989*). Surveys were carried out during January–May 2014 (dry season), October–November 2014 (late rainy season), January–March 2015 (dry season) in mainland Southeast Asia, and during October–November 2014 and 2017 (dry season) in insular Indonesia. Locations were recorded using a handheld GPS unit (Garmin Ltd,

Olathe, KS). In-field identification of mealybugs was based on morphological characters, while samples were also transferred to the laboratory for further taxonomic identification. Voucher specimens of *P. manihoti* were equally deposited at the Thai Department of Agriculture (Bangkok, Thailand), Bogor Agricultural University (Bogor, Indonesia) and Plant Protection Research Institute (Hanoi, Vietnam).

To assess local *A. lopezi* establishment and parasitism rates, mealybug-infected tips were collected in the field and transferred to a laboratory. Upon arrival in the laboratory, each tip was carefully examined, predators were removed and the total number of *P. manihoti* was determined. Tips were then placed singly into transparent polyvinyl chloride (PVC) containers, closed with fine cotton fabric mesh. Over the course of three weeks, containers were inspected on a daily basis for emergence of parasitoids and *A. lopezi* parasitism levels (per tip and field) were computed. Next, for fields where presence of *A. lopezi* was reported, we carried out a regression analysis to relate field-level mealybug abundance with parasitism rate. Mealybug infestation levels and parasitism rates were log-transformed to meet assumptions of normality and homoscedasticity, and all statistical analyses were conducted using SPSS.

### Multi-year mealybug and parasitoid population assessment in Vietnam

From July 2013 until July 2015, we conducted population surveys in Tay Ninh province, Vietnam; an area with near-continuous, all-year cassava cultivation (see also [Le et al., 2018](#)). The cassava mealybug is assumed to have arrived in southern Vietnam during 2011–2012, and *A. lopezi* was first detected from Tay Ninh province in early 2013. Eight newly-planted cassava fields were selected of uniform age, crop variety, developmental stage and management. Every two months, insect surveys were done within these fields to characterize *P. manihoti* incidence, infestation pressure and *A. lopezi* parasitism rate. In each field, a total of five linear 10–15 m transects were screened (plants routinely spaced at 0.8–1.2 m) and, 50 plants were carefully inspected for *P. manihoti*. *Phenacoccus manihoti* infestation was recorded as field-level abundance (number of individuals per infected tip) and field-level incidence (proportion of mealybug-affected tips) at each sampling date and location. To assess *A. lopezi* parasitism rates, 20 mealybug-infested tips were randomly collected from each field by breaking off the top parts of individual plants, and transferred to the laboratory. Parasitism rates were estimated from these samples as described above, and parasitism levels were computed for each individual field and sampling date. We used analysis of variance (PROC MIXED, SAS version 9.1; SAS Institute, Cary, NC, USA) with field as the random factor, and tested the effect of cassava age, sampling date and year for *P. manihoti* incidence, abundance and *A. lopezi* parasitism. Means were compared with least squares means approach. Mealybug abundance data were log-transformed while incidence, parasitism and hyperparasitism data were arcsine-transformed to meet normality.

The intrinsic rate of mealybug population increase,  $r$ , over 2 months was calculated over subsequent sampling events as  $\ln(m_{t+1}/m_t)$  where  $m$  = the per-tip mealybug density. This growth rate was regressed against the mealybug parasitism rate as a means of evaluating the role of the parasitoids in suppressing mealybug population growth rates and also of

estimating the parasitism level that correlates with a decrease in mealybug population growth rate (for other uses of this approach, see [Lin & Ives, 2003](#); [Plecas et al., 2014](#)). The statistical significance of the relationship between parasitism rate and mealybug population growth was assessed using a generalized linear model incorporating normal error distribution with  $r$  as the response variable and parasitism level and field identity as independent variables.

### Exclusion cage assays

In August 2014, a field study was initiated at the Rayong Field Crops Research Center (RYFCRC) in Rayong, Thailand (see [Thancharoen et al., 2018](#)). To assess the relative contribution of natural enemies such as *A. lopezi* to pest control, we employed exclusion assays ([Snyder & Wise, 2001](#); [Costamagna, Landis & DiFonzo, 2007](#)). More specifically, to determine separate and joint effects of *P. manihoti* and *A. lopezi* on cassava crop yield, four different treatments were established using two common cassava clones: Kasetsart 50 (KU50) and Rayong 72 (R72). Treatments consisted of the following: (1) 'full cage' assays, in which a plant was entirely covered by a mesh screen cage to exclude all natural enemies; (2) 'sham' cage assays, in which a plant was covered by a screen cage to provide a microhabitat similar to that of the 'full cage', but left open at the sides to allow natural enemy access; (3) 'no cage' assays, in which a plant was kept without a cage as a 'real-world' benchmark. For the 'no cage' assay, two different mealybug infestation modes were adopted: (1) one single infestation with 10 mealybug adults per plot at the onset of the experiment; (2) a monthly infestation with 10 *P. manihoti* adults per plot, to ensure a sustained mealybug population over the entire course of the experiment. Each treatment (i.e., a single cage containing four replicated plants) was established with four replicates, for two different cassava clones. The experimental field was established using locally-sourced stem cuttings of KU50 or R72, planted at 1-m distances within plots.

Once plants had reached 4.5 months of age,  $2 \times 2 \times 2$  m polyvinylchloride (PVC) frame cages were deployed, with four plants contained within each cage. Cages were covered with fine nylon mesh screen to prevent entry by insects, including *A. lopezi* parasitoids. In January 2015, 10 adult female *P. manihoti* were gently brushed onto plants within each treatment. Mealybug adults were obtained from a laboratory colony at RYFCRC that had been started in early 2014, in which *P. manihoti* were maintained on potted cassava plants within a screen-house that were regularly supplemented with field-collected individuals. Visual observations were carried out within the cages on a monthly basis and *P. manihoti* abundance was recorded on each plant. On September 7, 2015, once the crop had reached 12 months of age, cages were removed and plants within the different experimental treatments were harvested manually. At harvest, fresh root yield (FRY) was determined for each plant to determine treatment effects ([Karlström et al., 2016](#)).

Mealybug population build-up under each experimental treatment was calculated, by converting the average number of mealybugs per plant (averaged across plants within a given treatment, as to avoid pseudo-replication) on a given sampling date to cumulative

mealybug-days (CMD) (Ragsdale et al., 2007):

$$\sum_{n=1}^{\infty} = \left( \frac{x_{i-1} + x_i}{2} \right) \times (t_i - t_{i-1})$$

where  $n$  is the total number of days over which sampling took place,  $x_i$  is the number of mealybugs counted on day  $i$  and  $t_i$  is the number of days since the initiation of sampling on day  $i$ .

Mealybug population build-up under each treatment was computed, and average CMD measures were compared between the respective treatments using a mixed modeling approach with plot as the random factor and time as the repeated measure. A mixed modeling approach was used to contrast fresh root yield (FRY), using treatment and variety as fixed factors. Plant survival rates were compared between treatments, using a Chi-square analysis. Where necessary, data were transformed to meet assumptions of normality and homoscedasticity, and all statistical analyses were conducted using SPSS. In cases where data could not be transformed to normality, non-parametric tests (e.g., Kruskal–Wallis) were used.

### Country-wide yield changes

Crop production statistics were obtained through the Office of Agricultural Economics, Ministry of Agriculture & Cooperatives (Bangkok, Thailand). Yield measures were computed for 2006–2016, for a total of 51 cassava-growing provinces within Thailand, and annual weighted means were compared between successive years. Province-level yields were assigned different weights, based upon the local extent of cassava cultivation (in terms of harvested area) during a given year. Cassava crop yield can be impacted by agro-climatic conditions (e.g., temperature-related variables) and by attack of pests such as *P. manihoti*. To assess the impact of sustained *A. lopezi* releases from the 2011 cropping season onward, mean values of yields across all the cassava-growing provinces were regressed with explanatory variables which included rainfall, minimum and maximum temperature (obtained from Thai Meteorological Department, Bangkok, Thailand). Additionally, time (year for which yield observations and agro-climatic data were obtained) was also added as an explanatory variable to control for variation in the variables across years. In addition, a categorical variable representing the introduction of *A. lopezi* (dummy-coded as 1 for ‘presence’ for the 2011 and 2012 growing seasons, and dummy-coded as 0 for ‘absence’ for growing seasons 2008, 2009 and 2010) was also added as an additional explanatory variable in the regression model. Before proceeding for further analysis, the distribution of the response variable (i.e., yield) was tested and was identified to be normal (Shapiro test,  $p < 0.05$ ). A step-wise regression approach (forward and backward) using a linear modeling approach was used to identify the model that best explains variation in yield. The model with the lowest Akaike information criterion (AIC) was selected. In the next step, the model with the lowest AIC score was compared with models containing interaction terms between time and other explanatory variables (i.e., temperature minimum, rainfall and *A. lopezi* introduction) both separately and simultaneously (see Table S1). Model with the least AIC score, and the highest adjusted  $R^2$  value was selected and is described in the

Results section. Regression analysis was performed in R (v 3.4.1) statistical computing environment. Additionally, R package “gvlma” was used to assess if the assumptions of regression were met by the selected model. Additional diagnostics of the selected model, such as determination of variance inflation factor (VIF) for detection of multicollinearity, the Non-constant Variance Score Test (i.e., test for heteroscedasticity of residuals over fitted values) was performed using R package “MASS” and “car”, respectively.

## RESULTS

### Multi-country pest & natural enemy survey

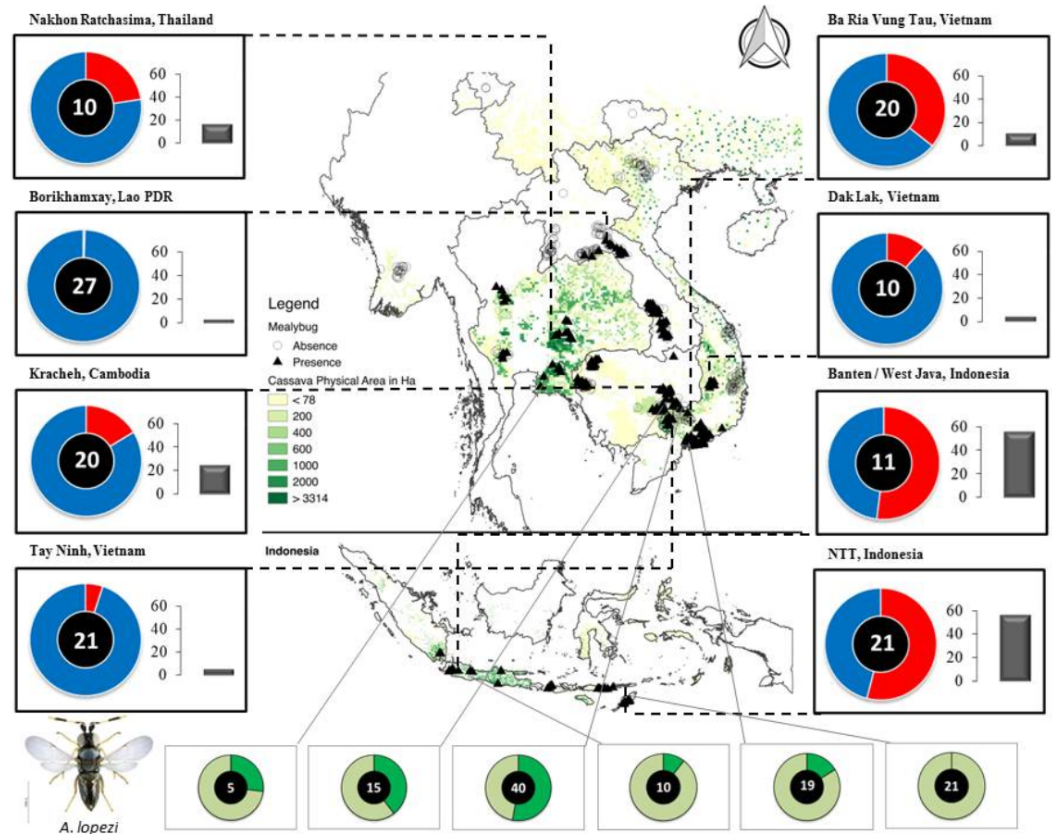
During continental-scale insect surveys from 2014 until 2017 (i.e., 5–8 years following the initial *A. lopezi* introduction), the mealybug complex on cassava largely comprised four non-native species: (1) *P. manihoti*; (2) the papaya mealybug *Paracoccus marginatus* Williams & Granara de Willink; (3) *Pseudococcus jackbeardsleyi* Gimpel & Miller; and (4) the striped mealybug *Ferrisia virgata* Cockerell. *Phenacoccus manihoti* was the most abundant and widespread mealybug species, and was reported from 37.0% ( $n = 549$ ) and 100% fields ( $n = 52$ ) in mainland Southeast Asia and Indonesia, respectively. Among sites, *P. manihoti* reached field-level incidence of  $7.6 \pm 15.9\%$  (mean  $\pm$  SD; i.e., proportion mealybug-affected tips) and abundance of  $14.4 \pm 31.0$  insects per infested tip in mealybug-affected fields (or  $5.2 \pm 19.8$  insects per tip across all fields) in mainland Southeast Asia, and incidence rates of  $52.7 \pm 30.9\%$  and  $42.5 \pm 67.7$  individuals per tip in Indonesia. Field-level incidence and population abundance were highly variable among settings and countries, reaching respective maxima of 100%, and 412.0 individuals per tip (Fig. 1).

When examining *P. manihoti* parasitism rates from a select set of sites, *A. lopezi* was present in 96.9% of mealybug-affected fields ( $n = 97$ ) in mainland Southeast Asia, yet were only found in 27.5% sites ( $n = 40$ ) across Indonesia. Among sites, highly variable parasitism rates were evident with dry-season rates of  $16.3 \pm 3.4\%$  in coastal Vietnam, versus  $52.9 \pm 4.3\%$  in intensified systems of Tay Ninh (also in Vietnam). In Indonesia, *A. lopezi* was found in 22.0% fields in Lombok ( $n = 9$ ) and was absent from prime growing areas in Nusa Tenggara Timur (NTT). In sites where *A. lopezi* had successfully established, dry-season parasitism ranged from 0% to 97.4%, averaging  $30.0 \pm 24.0\%$  ( $n = 110$ ) (Fig. S1). In fields where *A. lopezi* had effectively established, mealybug pest pressure exhibited a negative regression with parasitism rate ( $F_{1,98} = 13.162$ ,  $p < 0.001$ ;  $R^2 = 0.118$ ).

### Multi-year mealybug and parasitoid population assessment in Vietnam

Over the course of three years, we monitored *P. manihoti* abundance, field-level incidence and associated *A. lopezi* parasitism rates in Tay Ninh, southern Vietnam. Field-level incidence of *P. manihoti* ranged from 0% to 82%, averaging  $24.8 \pm 17.7\%$  (mean  $\pm$  SD) plants infested over two consecutive crop cycles. Mealybug incidence was significantly higher on older crops ( $F_{7,57} = 9.9$ ;  $p < 0.0001$ ), and rapidly increased during the dry season. Similarly, mealybug abundance (average  $5.6 \pm 5.0$  individuals per tip) was higher during the dry season ( $F_{1,63} = 9.10$ ;  $P = 0.0037$ ), and in crops older than six months, when compared to younger crops ( $F_{7,57} = 2,694.06$ ;  $P < 0.0001$ ). From mid-2014 onward,



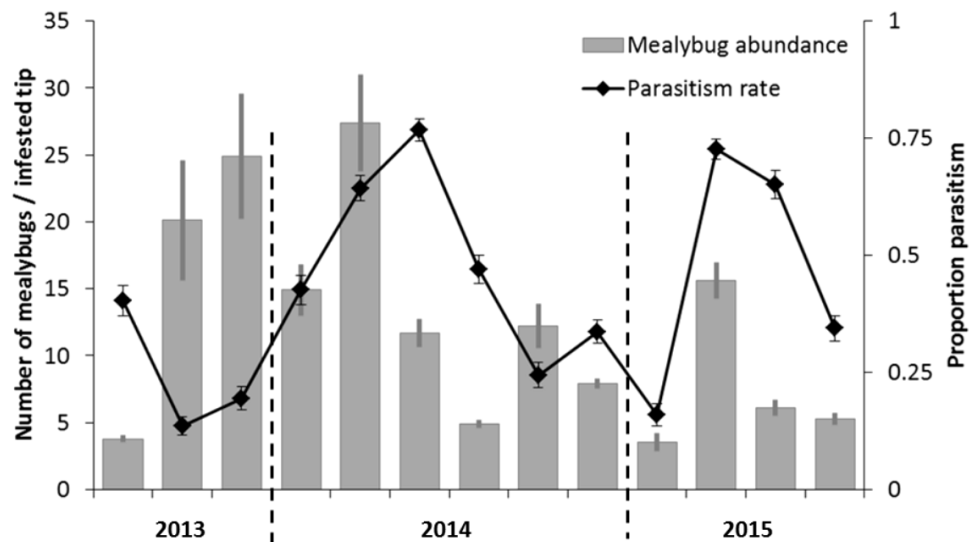


**Figure 1** Map of Southeast Asia, depicting *P. manihoti* spatial distribution, infestation pressure and *A. lopezi* parasitism rates. Doughnut charts in the left and right margins represent field-level incidence (i.e., red portion—on a blue background—reflecting the proportion of *P. manihoti* affected tips, ranging from 0 to 1 for full circumference), and are complemented with bar charts indicative of plant-level *P. manihoti* abundance (i.e., average number of individuals per tip). The number inside each doughnut reflects the number of fields sampled per locale. Doughnut charts in the lower panel indicate average *A. lopezi* parasitism rate at six selected locales (depicted by the dark green section—on a light green background—reflecting proportion parasitism ranging from 0 to 1 for full circumference), with varying numbers of fields sampled per locale. The distribution map is created as overlay on a 2005 cassava cropping area (You et al., 2017). Photograph: *Anagyrus lopezi* (credit G. Goergen, IITA).

Full-size [DOI: 10.7717/peerj.5796/fig-1](https://doi.org/10.7717/peerj.5796/fig-1)

mealybug populations remained at field-level abundance below 10–15 individuals per infested tip (Fig. 2). Furthermore, *A. lopezi* attained mean parasitism rates of  $42.3 \pm 21.7\%$ , with maxima of  $76.7 \pm 28.9\%$  during the early rainy season (Fig. 2). Overall, parasitism gradually increased over the dry season, up until crops were 4–6 months old.

Mealybug growth rates were significantly and negatively correlated with parasitism levels across the 8 sites studied (GLM w/ Normal error distribution and corrected for field:  $\chi_1^2 = 125.4$ ;  $P = 0.0017$ ; the field term was not significant;  $\chi_7^2 = 0.2$ ;  $P = 1$ ) (Fig. 3). The  $x$ -intercept of each per-field regression represents the parasitism level above which mealybug growth rates are negative and this value ranged between 0.38 and 0.69 for the 8 sites (average =  $0.47 \pm 0.09$ ) (Fig. 3). Whilst *A. lopezi* was the sole primary parasitoid at this location, three hyperparasitoid species attacked it locally at  $2.79 \pm 5.38\%$  levels (as % of parasitized hosts).



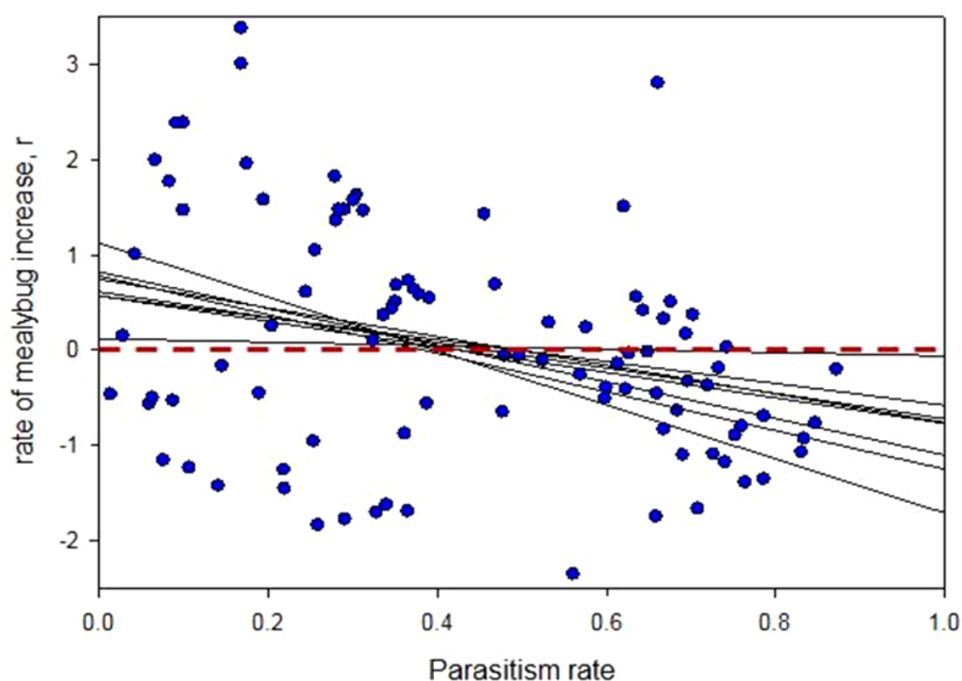
**Figure 2** Bi-monthly mealybug population fluctuations in southern Vietnam, over a 2-year time period. *Phenacoccus manihoti* dynamics are represented following the first record of *A. lopezi* presence in southern Vietnam, depicting field-level *P. manihoti* abundance ( $n = 8$ ) as contrasted with respective *A. lopezi* parasitism rates, from July 2013 until July 2015.

Full-size DOI: [10.7717/peerj.5796/fig-2](https://doi.org/10.7717/peerj.5796/fig-2)

### Exclusion cage assays

Over the entire assay, *P. manihoti* populations under ‘full cage’ attained  $48,318 \pm 51,425$  ( $n = 4$ ; mean  $\pm$  SD) and  $7,256 \pm 8,581$  cumulative mealybug days (CMD) in ‘sham cage’ for one popular variety (i.e., R72) (Thancharoen et al., 2018; Fig. 4). For a second variety, KU50, *P. manihoti* attained  $28,125 \pm 32,456$  CMD in a ‘full cage’ treatment, and  $1,782 \pm 1,073$  CMD in ‘sham cage’. This compared to CMD measures in a ‘no cage’ control of  $1,378 \pm 1,039$  and  $342 \pm 252$ , for R72 and KU50 respectively. CMD measures were significantly affected by treatment ( $F_{3,189} = 240.752$ ,  $p < 0.001$ ) and time ( $F_{6,189} = 113.347$ ,  $p < 0.001$ ), and the interaction term time  $\times$  treatment ( $F_{18,189} = 2.012$ ,  $p = 0.011$ ). Also, total CMD measures at the end of the trial significantly differed between treatments for both R72 and KU 50 ( $F_{3,12} = 6.767$ ,  $p = 0.006$ ;  $F_{3,12} = 11.152$ ,  $p = 0.001$ , respectively).

Cassava yield parameters varied considerably under the four experimental treatments, and for both crop varieties (see Thancharoen et al., 2018). For Rayong 72, plant survival attained 37.5% under ‘full cage’ as compared to 75% and 87.5% under ‘no cage’ or ‘sham cage’ conditions, respectively (Chi square,  $\chi^2 = 10.473$ ,  $p = 0.015$ ). Fresh root yield (FRY) was significantly affected by treatment ( $F_{3,27} = 4.104$ ,  $p = 0.016$ ) and variety ( $F_{1,27} = 4.364$ ,  $p = 0.046$ ). For R72 and KU50, FRY under ‘full cage’ was 74.6% or 71.2% lower than under ‘sham cage’ (Kruskal–Wallis,  $\chi^2 = 8.344$ ,  $p = 0.039$ ;  $\chi^2 = 19.134$ ,  $p < 0.001$ , respectively), and respective yield reductions for both varieties were 77.2% and 67.8% compared to ‘no cage’ treatments.

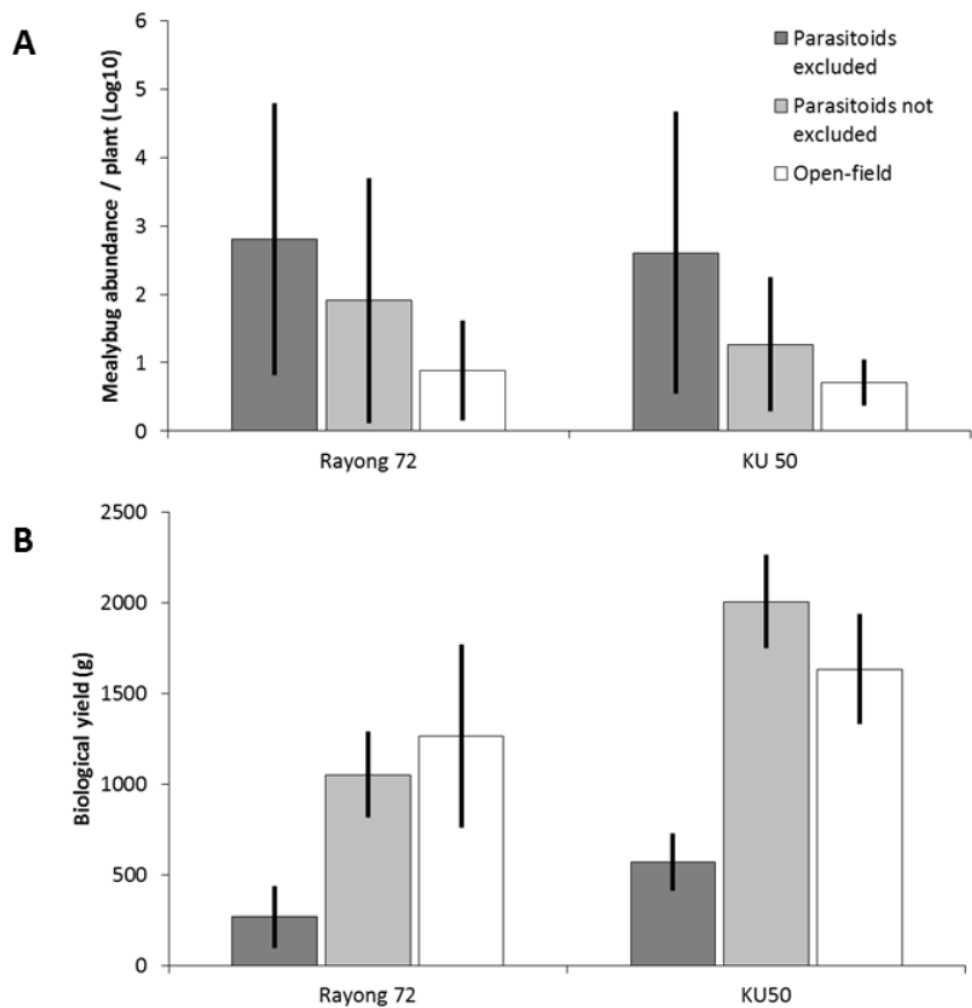


**Figure 3** Effect of cassava mealybug parasitism rate on intrinsic rate of mealybug increase over consecutive 2-month periods in Tay Ninh, Vietnam. Each dot represents a 2-month period in one of eight field plots. Thin lines are linear regressions per each of the eight sites monitored for illustrative purposes although the analysis was done on the entire data set. The thick black line shows the fit of the entire data set. The red dotted line shows  $r = 0$ ; values above this on the  $y$  axis indicate positive growth of mealybug populations and below it indicate negative population growth. Parasitism level above which *P. manihoti* growth rates are negative ranged between 0.38 and 0.69 for the eight sites. See text for statistical details.

Full-size  DOI: [10.7717/peerj.5796/fig-3](https://doi.org/10.7717/peerj.5796/fig-3)

### Country-wide yield changes

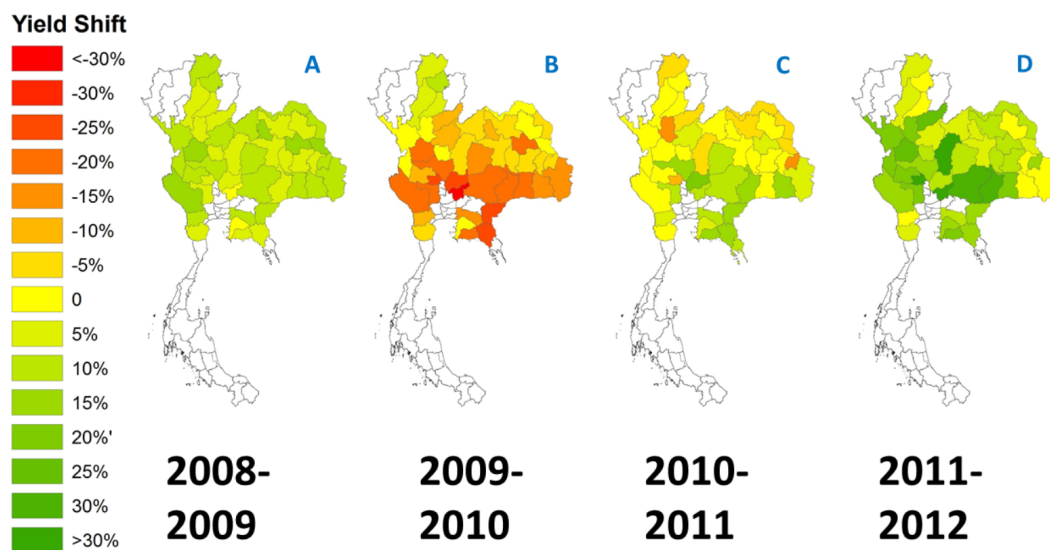
During the 2009 dry season, *P. manihoti* attained its peak population in Thailand, with field-level incidence near 100% and abundance rates of hundreds of *P. manihoti* per plant on at least 230,000 ha (Rojanaridpiched et al., 2013). Over the subsequent 2009-10 cropping season, province-level crop yields dropped by  $12.59 \pm 9.78\%$  nationwide (weighted mean:  $-18.2\%$ ) (Fig. 5). Furthermore, country-wide aggregate yields declined from 22.67 t/ha to 18.57 t/ha, and total production dropped by 26.86% to 22,005,740 tonnes of fresh root. Following the lowered crop output, prices for Thai cassava starch increased 2.38-fold at domestic prices in Thailand, and 2.62-fold at export prices (US\$ FOB, Free On Board) (Fig. S2). However, in the following growing seasons (i.e., 2011 and 2012), there was a marked improvement in yield across all regions, as compared to previous years (Fig. 5). It was also from mid-2010 onward that country-wide mass releases of *A. lopezi* were carried out. To test if the *A. lopezi* introduction was responsible for this improvement in yield, and to differentiate *P. manihoti*-induced yield drops from agro-climatic climatic impacts and changes across years, regression analyses were carried out with yield as response variable and agro-climatic parameters, year (“time”), and *A. lopezi* presence as explanatory variables.



**Figure 4** Mealybug abundance and subsequent yield parameters for two cassava varieties under an exclusion cage assay at Rayong, Thailand. Six weeks after inoculation, mealybug abundance ( $n = 16$ ; mean  $\pm$  SE) is compared between treatments for two common varieties (R72, KU50), and is significantly higher under 'full cage' conditions (i.e., exclusion of natural enemies, incl. *A. lopezi*), as compared to 'sham cage' and un-caged controls (ANOVA,  $F_{2,45} = 50.289$ ,  $P < 0.001$  for R72;  $F_{2,45} = 9.807$ ,  $P < 0.001$  for KU50). For each treatment, fresh root yield is determined at time of harvest, on a 12-month old crop.

Full-size DOI: [10.7717/peerj.5796/fig-4](https://doi.org/10.7717/peerj.5796/fig-4)

Multiple regression analysis revealed that a model with interaction terms between time and all explanatory variables, i.e., time of introduction of *A. lopezi* and rainfall had the lowest AIC score and the highest explanatory power (adjusted  $R^2$ ) (Table S1). The model showed a significantly positive effect ( $F_{7,183} = 8.641$ ) of the interaction term Time  $\times$  Presence (i.e., 'presence' of *A. lopezi* and time,  $p < 0.01$ ) on observed yields. The best model indicated that the introduction of *A. lopezi* (and not agro-climatic variables or changes in those variables over time) significantly increased yields across all cassava-growing regions during the 2011 and 2012 cropping seasons.



**Figure 5** Annual percent shifts in crop yield (t/ha) for 51 cassava-growing provinces in Thailand, reflective of the mealybug invasion and ensuing biological control. Shifts (A–D) cover the country-wide spread of *P. manihoti* from late 2008 until 2011, the first small-scale release of *A. lopezi* (Nov. 2009) and subsequent nation-wide distribution of the parasitoid from June 2010 onward. Province-level yield shifts depict the percent change of crop yield in one given year, as compared to the previous year.

Full-size DOI: [10.7717/peerj.5796/fig-5](https://doi.org/10.7717/peerj.5796/fig-5)

## DISCUSSION

In 2008, the invasive mealybug *P. manihoti* accidentally arrived in Thailand. Through its extensive spatial spread, rapid population build-up and unrestricted feeding on plants (this leading to stunting and plant death), *P. manihoti* caused considerable yield declines and a 27% drop in the nation's cassava production. This study shows how the neotropical parasitoid, *A. lopezi*, released throughout Thailand for mealybug control in 2010, had effectively established in 97% mealybug-affected fields in mainland Southeast Asia by 2014, and colonized 27% sites across insular Indonesia by late 2017. Attaining average dry-season parasitism rates of 30% across sites, *A. lopezi* populations readily oscillate with those of its mealybug host and suppress *P. manihoti* to incidence levels of 7% and background infestation pressure of a mere 14 individuals per (infested) tip. Experimental assays using two widely-grown cassava varieties reveal how biological control secures approximate yield gains of 5.3–10.0 t/ha. Our work demonstrates how *A. lopezi* downgrades the invasive *P. manihoti* to non-economic levels at a continental scale, without any known detrimental side-effects. Offering a quantitative assessment of IBC's contribution to (the recovery of) primary productivity in Asia's cassava crop, our work illuminates the broader societal value of biological control in a geographical region where there is heavy and increasing use of pesticides (*Schreinemachers et al., 2015*).

Aside from featuring as a 'beacon of hope' in Asia's pesticide-tainted farming systems, our work heralds a new era for the discipline of insect biological control. Since the late 1800s, biological control has permitted the complete or partial suppression of 226 debilitating insect pests globally, it has formed the crux of founding ecological theories

(e.g. *Hairston, Smith & Slobodkin, 1960*), and was widely deemed to be a safe, dependable and preferred means for (invasive) pest control for most of its history. Following the release of Rachel Carson's 1962 *Silent Spring*, biological control was met with unrestrained enthusiasm and a firm belief in its potential as a sound alternative to pesticide-centered practices. Yet, as concerns over its ecological risks rose following the *Howarth (1983)* and *Howarth (1991)* denunciation of few historic cases of malpractice, regulatory hurdles surfaced, public funding lowered and the practice of insect biological control went through trying yet necessary reform (*Strong & Pemberton, 2000; Hoddle, 2004; Messing & Brodeur, 2018*). Over the past three decades, IBC implementation has centered on ecological safety and increasingly strives to balance environmental benefits and risks (*Heimpel & Cock, 2018*). Though weed biological control indeed has a 99% safety record (*Suckling & Sforza, 2014*), scientists are conscious that ecological risk will never be zero and that certain risk factors are difficult to anticipate and predict (*Crooks & Soulé, 1999; Sexton et al., 2017*). In the meantime, it's well-recognized that invasive pests tend to present far higher threats to native biota than judiciously-selected natural enemies with a narrow dietary breadth (*Culliney, 2005*). Though the 1980s Africa campaign against *P. manihoti* was implemented during times when the primary focus of insect biological control was on benefits (but see *Neuenschwander, 2001*), risks were considered to be minimal and did not delay implementation. The fact that *A. lopezi* was both effective and highly host-specific vindicated this. As a result, the implementation of IBC in Southeast Asia more than 30 years later was greatly facilitated by recognizing that (i) IBC had been effective across Africa's cassava-belt, and (ii) widespread benefits were amplified because of an absence of negative environmental side-effects on non-target species.

In light of the above, *A. lopezi* attained consistently high parasitism rates across most of the *P. manihoti* range of climatic suitability in Asia (*Yonow, Kriticos & Ota, 2017*), except for insular Indonesia where it was only introduced at one site in late 2014. The far superior *P. manihoti* infestation pressure in eastern Indonesia (i.e., NTT, Lombok), where *A. lopezi* waits to be introduced, further emphasize the contribution of this parasitoid to mealybug control. Across locations, *A. lopezi* attained maximum parasitism levels of 97% (in late dry season, at Tay Ninh), which greatly surpass the 33–36% established threshold (of maximum parasitism rate) for successful biological control—i.e., which results in lasting pest population suppression (*Hawkins & Cornell, 1994*). At multiple sites, parasitism rates equally surpassed (max. 30%) levels from smallholder plots in Africa's savanna (*Hammond & Neuenschwander, 1990*). Factors ensuring this exceptional parasitoid efficacy and resulting pest control are: (a) unique features of the cassava crop, including prolonged durational stability, vegetational complexity and a constitutive secretion of energy-rich nectar for foraging parasitoids (*Pinto-Zevallos, Pareja & Ambrogi, 2016*); (b) spatio-temporal continuity of mealybug-infested crops at a landscape level (*Schellhorn, Bianchi & Hsu, 2014*), especially in locations where farmers employ staggered planting and piece-meal harvesting; (c) favorable ecological traits of *A. lopezi*, including high dispersal ability, environmental adaptability and density-dependent parasitism (*Neuenschwander et al., 1989*); (d) non- or limited use of (prophylactic) insecticides, except for Thailand and parts of southern Vietnam; and (e) human-assisted dispersal

of *A. lopezi*, via (parasitized) mealybug-infested planting material (Herren *et al.*, 1987). Furthermore, substantial fertilizer inputs and suitable water management in areas with intensified cassava production—e.g., Vietnam’s Tay Ninh province, or parts of eastern Thailand such as Nakhon Ratchassima—likely benefited biological control further by boosting *A. lopezi* development and fitness (Wyckhuys *et al.*, 2017a). All of the above factors may have contributed to the stabilization of mealybug populations at 27.2% incidence in affected fields and field-level abundance below 10–15 individuals per infested tip, similar to what was observed in Africa during the 1980s campaign (Fig. 2; Hammond & Neuenschwander, 1990).

Exclusion cage assays illustrate how biological control enabled a root yield recovery of 5.3–10.0 t/ha in two main cassava varieties, and how 2015 yields under ‘no cage’ (i.e., ‘real-world’) conditions were in line with historic in-country yield tendencies. Though no direct field-level measurements were made of *A. lopezi* parasitism during the cage trials, biological control was found to occupy a central role in lowering *P. manihoti* populations (Thancharoen *et al.*, 2018), and *A. lopezi* is a determining factor in ensuring mealybug suppression in other key cassava-growing areas in Southeast Asia (Le *et al.*, 2018). Cage trials also showed large variability in responses between the two cassava clones, likely reflective of differences in plant vigor and an individual clone’s photosynthetic capability (Connor, Cock & Parra, 1981; Cock, 2012). The cassava plant does possess a unique set of features to sustain root production under (a)biotic stress, including the adaptive mobilization of biomass and a highly-effective use of resources (Cock, 2012). Yet, the pronounced production losses—under cage conditions, particularly for R72—can be ascribed to continuous (unrestrained) attack of the active apex, direct damage to stems and high rates of plant death.

As *P. manihoti* presently occurs at low infestation pressure across mainland Southeast Asia, cage assays lend themselves to further extrapolation to a broader geographical scale. Yet, local environmental conditions may still affect parasitoid abundance, efficacy and (biological control) impact. For example, slightly higher *P. manihoti* population levels were recorded in settings with sandy, low-fertile soils (Wyckhuys *et al.*, 2017a) and biological control under those conditions merits closer research attention. Also, as landscape composition and plant disease infection status modulate *P. manihoti* performance and efficacy of biological control at a local scale (Wyckhuys *et al.*, 2017b; Le *et al.*, 2018), further replicated trials could be warranted to validate the robustness of our findings under varying agro-ecological contexts. Despite the above confounding factors, careful analysis of production statistics and commodity market fluxes (as in section iv and Wyckhuys *et al.*, 2018) support our empirical results and confirm *A. lopezi* to be the major biotic factor affecting mealybug population growth. In the meantime, Indonesian sites where *A. lopezi* has not yet established now constitute a ‘natural laboratory’ to refine and validate existing projections on *A. lopezi*-mediated yield gain (and crop recovery), in advance of the natural arrival/introduction of the parasitoid.

In tropical Asia, cassava underpins a multi-billion dollar starch sector, constitutes a key source of farm income and provides an (oftentimes indirect) means to food security for poor, under-privileged populations (Howeler, 2014; Delaquis, De Haan & Wyckhuys, 2017).

On the one hand, the *P. manihoti*-induced yield shocks, as recorded during 2009–2011, can have major implications for rural livelihoods. Sustained pest attack can aggravate food security issues in areas where cassava is a prime food staple or progress into chronic ‘poverty traps’ (Tiftonell & Giller, 2013), all of which is counteracted through *A. lopezi*-mediated biological control. Aside from restoring FRY, *A. lopezi* equally helped recover a plant’s total dry matter or ‘biological yield’ (Thancharoen et al., 2018), which is particularly relevant in areas of tropical Asia where cassava leaves and shoots constitute part of the local diet of rural communities. On the other hand, the net productivity loss of 5.14 million ton of fresh root equaled a respective loss of revenue of US\$ 267.5–591.7 million (at 2009–10 factory price) for Thailand’s cassava sector and the Asia-based starch industry. Hence, aside from its manifest (direct, indirect) contribution to local food security, socio-economic benefits of the *P. manihoti* campaign are deemed to be substantial and potentially equal or even surpass those recorded previously in Africa (Zeddies et al., 2001).

Yield recovery levels in our cage assays were considerably higher than the 2.5 t/ha yield increase recorded through on-farm measurements in sub-Saharan Africa (Neuenschwander et al., 1989). At Thai farm-gate prices, *A. lopezi*-mediated yield recovery equals to US\$200–704 per ha (Thancharoen et al., 2018), though this does not take into account changes in production costs, local elasticities of supply and demand, or (often substantial) insecticide/fertilizer expenditures. Though we do call for caution in extrapolating our findings, the approximate value of *P. manihoti* biological control in Asia could thus be hundreds of dollars higher than existing estimates of \$63 ha<sup>-1</sup> year<sup>-1</sup> across global biomes including natural systems (Costanza et al., 1997), \$33 ha<sup>-1</sup> year<sup>-1</sup> for (natural) biological control of the soybean aphid in the US Midwest (Landis et al., 2008), or \$75 to \$310 ha<sup>-1</sup> year<sup>-1</sup> for bird-mediated pest control in Costa Rican coffee (Karp et al., 2013). From the above it is clear that the potential of insect biological control has been significantly under-valued (Landis et al., 2008; Naranjo, Ellsworth & Frisvold, 2015), and that comprehensive cost-benefit analyses are urgently needed to raise (or restore) societal recognition of this important and safe ecosystem service.

These substantial economic benefits of (naturally-occurring, cost-free) biological control need to be contrasted with the unrelenting global increase in the use of insecticides for mitigation of (domestic and, increasingly invasive) pests (Enserink et al., 2013). Following the *P. manihoti* invasion, pesticides have equally become pervasive in Thailand’s cassava crop and growers have embraced the (prophylactic) use of neonicotinoid insecticides. Yet, given the omnipresence of *A. lopezi* and the largely low mealybug population levels in pesticide-free cassava plots across Southeast Asia, cost-effectiveness of such approaches needs closer scrutiny. Though pesticides do bring certain benefits to society, they tend to simplify ecological communities, adversely impact natural enemies and thus accelerate pest proliferation (Lundgren & Fausti, 2015). On the other hand, our work shows how a carefully-selected, specialist natural enemy constitutes a viable alternative to insecticide-centered approaches. Hence, potential (non-target ecological) risks of classical biological control have to be viewed in terms of refraining from action and thus creating room for far-less environmentally-friendly tactics such as (systemic) pesticides (Messing & Wright, 2006; Suckling & Sforza, 2014; Hajek et al., 2016).



## CONCLUSIONS

This study provides a quantitative assessment of how IBC helped restore primary productivity in Asia's cassava crop, following the arrival and extensive spread of an invasive sap-feeding pest, i.e., the cassava mealybug. We demonstrate that IBC can provide durable and cost-effective control of the invasive *P. manihoti*, and delivers substantial and sustainable socio-economic and environmental benefits (Bale, Van Lenteren & Bigler, 2008; Naranjo, Ellsworth & Frisvold, 2015). Furthermore, we emphasize that by recognizing the minimal ecological risks associated with the introduction of a host-specific parasitoid and by deliberately balancing benefits and risks of biological control (see Heimpel & Cock, 2018), the transformative potential of IBC can be fully exploited. In a world typified by massive declines in insect numbers, extreme biodiversity loss, and dwindling public interest in biological control (Bale, Van Lenteren & Bigler, 2008; Hallmann et al., 2017; Warner et al., 2011), our research underlines the immense yet largely untapped potential of ecologically-based approaches to resolve (invasive) pest problems. We advocate that (judiciously-implemented) IBC can positively assist with intensifying global agriculture and help feed a growing world population in the 21st century.

## ACKNOWLEDGEMENTS

This manuscript presents original data-sets, generated through fully collaborative research, with trials jointly conceptualized, defined and executed by national program staff and CIAT personnel. This paper is dedicated to the memory of Drs. RJ O'Neil, A. Winotai and AC Bellotti—pioneers in the field of insect biological control. We are grateful to collaborators at China Academy of Tropical Agricultural Sciences CATAS, for sharing monitoring records from Yunnan province.

## ADDITIONAL INFORMATION AND DECLARATIONS

### Funding

This initiative was conducted as part of an EC-funded, IFAD-managed, CIAT-executed programme (CIAT-EGC-60-1000004285), while additional funding was provided through the CGIAR-wide Research Program on Roots, Tubers and Banana (CRP-RTB). Activities in Thailand and Indonesia during 2017 were finalized using own resources of Kris AG Wyckhuys. There was no additional external funding received for this study. The funders had no role in study design, data collection and analysis, decision to publish, or preparation of the manuscript.

### Grant Disclosures

The following grant information was disclosed by the authors:  
CIAT-executed programme: CIAT-EGC-60-1000004285.  
CGIAR-wide Research Program.  
Tubers and Banana (CRP-RTB).  
Kris AG Wyckhuys.

### Competing Interests

Steve Wratten is an Academic Editor for PeerJ, and Jonathan Lundgren is an employee of the Ecdysis Foundation.

### Author Contributions

- Kris A.G. Wyckhuys conceived and designed the experiments, analyzed the data, prepared figures and/or tables, authored or reviewed drafts of the paper, approved the final draft.
- Prapit Wongtiem conceived and designed the experiments, authored or reviewed drafts of the paper, approved the final draft.
- Aunu Rauf conceived and designed the experiments, contributed reagents/materials/-analysis tools, authored or reviewed drafts of the paper, approved the final draft.
- Anchana Thancharoen conceived and designed the experiments, performed the experiments, analyzed the data, contributed reagents/materials/analysis tools, prepared figures and/or tables, authored or reviewed drafts of the paper, approved the final draft.
- George E. Heimpel, Geoff M. Gurr, Jonathan G. Lundgren, Vi X. Le, Matthew J.W. Cock, Teja Tscharntke, Steve D. Wratten, Minsheng You, Yanhui Lu, Johannes W. Ketelaar, Georg Goergen and Peter Neuenschwander authored or reviewed drafts of the paper, approved the final draft.
- Nhung T.T. Le conceived and designed the experiments, performed the experiments, contributed reagents/materials/analysis tools, authored or reviewed drafts of the paper, approved the final draft.
- Muhammad Zainal Fanani performed the experiments, analyzed the data, authored or reviewed drafts of the paper, approved the final draft.
- Dharani D. Burra analyzed the data, authored or reviewed drafts of the paper, approved the final draft.
- Leo K. Palao and Glenn Hyman analyzed the data, prepared figures and/or tables, authored or reviewed drafts of the paper, approved the final draft.
- Ignazio Graziosi performed the experiments, analyzed the data, authored or reviewed drafts of the paper, approved the final draft.
- Liem V. Nguyen contributed reagents/materials/analysis tools, authored or reviewed drafts of the paper, approved the final draft.

### Data Availability

The following information was supplied regarding data availability:

The raw data are provided in a [Supplementary File](#).

### Supplemental Information

Supplemental information for this article can be found online at <http://dx.doi.org/10.7717/peerj.5796#supplemental-information>.

## REFERENCES

- Andrews KL, Bentley JW, Cave RD. 1992.** Enhancing biological control's contributions to integrated pest management through appropriate levels of farmer participation. *Florida Entomologist* 75:429–439 DOI 10.2307/3496124.

- Bale JS, Van Lenteren JC, Bigler F. 2008.** Biological control and sustainable food production. *Philosophical Transactions of the Royal Society of London B* **363**:761–776 DOI [10.1098/rstb.2007.2182](https://doi.org/10.1098/rstb.2007.2182).
- Barnes AD, Jochum M, Mumme S, Haneda NF, Farajallah A, Widarto TH, Brose U. 2014.** Consequences of tropical land use for multitrophic biodiversity and ecosystem functioning. *Nature Communications* **5**:Article 5351 DOI [10.1038/ncomms6351](https://doi.org/10.1038/ncomms6351).
- Bebber DP, Ramotowski MAT, Gurr SJ. 2013.** Crop pests and pathogens move polewards in a warming world. *Nature Climate Change* **3**:985–988 DOI [10.1038/nclimate1990](https://doi.org/10.1038/nclimate1990).
- Bradshaw CJ, Leroy B, Bellard C, Roiz D, Albert C, Fournier A, Barbet-Massin M, Salles JM, Simard F, Courchamp F. 2016.** Massive yet grossly underestimated global costs of invasive insects. *Nature Communications* **7**:Article 12986 DOI [10.1038/ncomms12986](https://doi.org/10.1038/ncomms12986).
- Cock JH. 2012.** Cassava growth and development. In: Howeler RH, ed. *The cassava handbook: a reference manual*. Cali: International Center for Tropical Agriculture CIAT, 39–61.
- Cock MJW, Day RK, Hinz HL, Pollard KM, Thomas SE, Williams FE, Witt ABR, Shaw RH. 2016a.** The impacts of some classical biological control successes. *CAB Reviews* **10**(42):1–58 DOI [10.1079/PAVSNNR201510042](https://doi.org/10.1079/PAVSNNR201510042).
- Cock MJ, Murphy ST, Kairo MT, Thompson E, Murphy RJ, Francis AW. 2016b.** Trends in the classical biological control of insect pests by insects: an update of the BIOCAT database. *BioControl* **61**:349–363 DOI [10.1007/s10526-016-9726-3](https://doi.org/10.1007/s10526-016-9726-3).
- Connor DJ, Cock JH, Parra GE. 1981.** Response of cassava to water shortage. I. Growth and yield. *Field Crops Research* **4**:181–200 DOI [10.1016/0378-4290\(81\)90071-X](https://doi.org/10.1016/0378-4290(81)90071-X).
- Costamagna AC, Landis DA, DiFonzo CD. 2007.** Suppression of soybean aphid by generalist predators results in a trophic cascade in soybeans. *Ecological Applications* **17**:441–451 DOI [10.1890/06-0284](https://doi.org/10.1890/06-0284).
- Costanza R, d’Arge R, De Groot R, Farber S, Grasso M, Hannon B, Limburg K, Naeem S, O’Neill RV, Paruelo J, Raskin RG. 1997.** The value of the world’s ecosystem services and natural capital. *Nature* **387**:253–260 DOI [10.1038/387253a0](https://doi.org/10.1038/387253a0).
- Crooks JA, Soulé ME. 1999.** Lag times in population explosions of invasive species: causes and implications. In: Sandlund OT, Schei PJ, Viken Å, eds. *Invasive species and biodiversity management*. Dordrecht: Kluwer Academic Publishers, 103–125.
- Culliney TW. 2005.** Benefits of classical biological control for managing invasive plants. *Critical Reviews in Plant Sciences* **24**:131–150 DOI [10.1080/07352680590961649](https://doi.org/10.1080/07352680590961649).
- Daily GC, Polasky S, Goldstein J, Kareiva PM, Mooney HA, Pejchar L, Ricketts TH, Salzman J, Shallenberger R. 2009.** Ecosystem services in decision making: time to deliver. *Frontiers in Ecology and the Environment* **7**:21–28 DOI [10.1890/080025](https://doi.org/10.1890/080025).
- DeBach P, Huffaker CB. 1971.** Experimental techniques for evaluation of the effectiveness of natural enemies. In: Huffaker CB, ed. *Biological control*. Boston: Springer, 113–140.
- Delaquis E, De Haan S, Wyckhuys KAG. 2017.** On-farm diversity offsets environmental pressures in tropical agro-ecosystems: a synthetic review for

- cassava-based systems. *Agriculture, Ecosystems and Environment* **251**:226–235 DOI [10.1016/j.agee.2017.09.037](https://doi.org/10.1016/j.agee.2017.09.037).
- Enserink M, Hines PJ, Vignieri SN, Wigginton NS, Yeston JS. 2013.** The pesticide paradox. *Science* **341**:728–729 DOI [10.1126/science.341.6147.728](https://doi.org/10.1126/science.341.6147.728).
- Graziosi I, Minato N, Alvarez E, Ngo DT, Hoat TX, Aye TM, Pardo JM, Wongtiem P, Wyckhuys KAG. 2016.** Emerging pests and diseases of South-east Asian cassava: a comprehensive evaluation of geographic priorities, management options and research needs. *Pest Management Science* **72**:1071–1089 DOI [10.1002/ps.4250](https://doi.org/10.1002/ps.4250).
- Greathead DJ, Greathead AH. 1992.** Biological control of insect pests by insect parasitoids and predators: the BIOCAT database. *Biocontrol News and Information* **13**:61N–68N.
- Gutierrez AP, Caltagirone LE, Meikle W. 1999.** Evaluation of results. Economics of biological control. In: Bellows TS, Fisher TW, eds. *Handbook of biological control*. San Diego: Academic Press, 243–252.
- Hairston NG, Smith FE, Slobodkin LB. 1960.** Community structure, population control and competition. *American Naturalist* **94**:421–425 DOI [10.1086/282146](https://doi.org/10.1086/282146).
- Hajek AE, Hurley BP, Kenis M, Garnas JR, Bush SJ, Wingfield MJ, Van Lenteren JC, Cock MJ. 2016.** Exotic biological control agents: a solution or contribution to arthropod invasions. *Biological Invasions* **18**:953–969 DOI [10.1007/s10530-016-1075-8](https://doi.org/10.1007/s10530-016-1075-8).
- Hallmann CA, Sorg M, Jongejans E, Siepel H, Hofland N, Schwan H, Stenmans W, Müller A, Sumser H, Hörren T, Goulson D. 2017.** More than 75 percent decline over 27 years in total flying insect biomass in protected areas. *PLOS ONE* **12**:e0185809 DOI [10.1371/journal.pone.0185809](https://doi.org/10.1371/journal.pone.0185809).
- Hammond WNO, Neuenschwander P. 1990.** Sustained biological control of the cassava mealybug *Phenacoccus manihoti* (Homoptera: Pseudococcidae) by *Epidinocarsis lopezi* (Hymenoptera: Encyrtidae) in Nigeria. *Entomophaga* **35**:515–526 DOI [10.1007/BF02375086](https://doi.org/10.1007/BF02375086).
- Hawkins BA, Cornell HV. 1994.** Maximum parasitism rates and successful biological control. *Science* **266**:1886–1887 DOI [10.1126/science.266.5192.1886](https://doi.org/10.1126/science.266.5192.1886).
- Heimpel GE, Cock MJW. 2018.** Shifting paradigms in the history of classical biological control. *BioControl* **63**:27–37 DOI [10.1007/s10526-017-9841-9](https://doi.org/10.1007/s10526-017-9841-9).
- Heimpel GE, Mills NJ. 2017.** *Biological control: ecology and applications*. Cambridge: Cambridge University Press, 386.
- Herren HR, Neuenschwander P. 1991.** Biological control of cassava pests in Africa. *Annual Review of Entomology* **36**:257–283 DOI [10.1146/annurev.en.36.010191.001353](https://doi.org/10.1146/annurev.en.36.010191.001353).
- Herren HR, Neuenschwander P, Hennessey RD, Hammond WNO. 1987.** Introduction and dispersal of *Epidinocarsis lopezi* (Hym. Encyrtidae), an exotic parasitoid of the cassava mealybug, *Phenacoccus manihoti* (Hom. Pseudococcidae), in Africa. *Agriculture, Ecosystems & Environment* **19**:131–144 DOI [10.1016/0167-8809\(87\)90013-2](https://doi.org/10.1016/0167-8809(87)90013-2).
- Hoddle MS. 2004.** Restoring balance: using exotic species to control invasive exotic species. *Conservation Biology* **18**:38–49 DOI [10.1111/j.1523-1739.2004.00249.x](https://doi.org/10.1111/j.1523-1739.2004.00249.x).

- Howarth FG. 1983.** Classical biological control: panacea or Pandora's Box? *Proceedings of the Hawaiian Entomological Society* **24**:239–244.
- Howarth FG. 1991.** Environmental impacts of classical biological control. *Annual Review of Entomology* **36**:485–509 DOI [10.1146/annurev.en.36.010191.002413](https://doi.org/10.1146/annurev.en.36.010191.002413).
- Howeler R. 2014.** *Sustainable soil and crop management of cassava in Asia*. Cali: International Center for Tropical Agriculture, CIAT, 280.
- Karlström A, Calle F, Salazar S, Morante N, Dufour D, Ceballos H. 2016.** Biological implications in cassava for the production of amylose-free starch: impact on root yield and related traits. *Frontiers in Plant Science* **7**:Article 604 DOI [10.3389/fpls.2016.00604](https://doi.org/10.3389/fpls.2016.00604).
- Karp DS, Mendenhall CD, Sandí RF, Chaumont N, Ehrlich PR, Hadly EA, Daily GC. 2013.** Forest bolsters bird abundance, pest control and coffee yield. *Ecology Letters* **16**:1339–1347 DOI [10.1111/ele.12173](https://doi.org/10.1111/ele.12173).
- Landis DA, Gardiner MM, Van der Werf W, Swinton SM. 2008.** Increasing corn for biofuel production reduces biocontrol services in agricultural landscapes. *Proceedings of the National Academy of Sciences of the United States of America* **105**:20552–20557 DOI [10.1073/pnas.0804951106](https://doi.org/10.1073/pnas.0804951106).
- Le TTN, Graziosi I, Cira TM, Gates MW, Wyckhuys KAG. 2018.** Landscape context does not constrain biological control of *Phenacoccus manihoti* in intensified cassava systems of southern Vietnam. *Biological Control* **121**:129–139 DOI [10.1016/j.biocontrol.2018.02.011](https://doi.org/10.1016/j.biocontrol.2018.02.011).
- Lin LA, Ives AR. 2003.** The effect of parasitoid host-size preference on host population growth rates: an example of *Aphidius colemani* and *Aphis glycines*. *Ecological Entomology* **28**:542–550 DOI [10.1046/j.1365-2311.2003.00536.x](https://doi.org/10.1046/j.1365-2311.2003.00536.x).
- Losey J, Vaughan M. 2006.** The economic value of ecological services provided by insects. *BioScience* **56**:311–323 DOI [10.1641/0006-3568\(2006\)56\[311:TEVOES\]2.0.CO;2](https://doi.org/10.1641/0006-3568(2006)56[311:TEVOES]2.0.CO;2).
- Luck RF, Shepard BM, Kenmore PE. 1988.** Experimental methods evaluating arthropod natural enemies. *Annual Review of Entomology* **33**:367–391 DOI [10.1146/annurev.en.33.010188.002055](https://doi.org/10.1146/annurev.en.33.010188.002055).
- Lundgren JG, Fausti SW. 2015.** Trading biodiversity for pest problems. *Science Advances* **1**:e1500558 DOI [10.1126/sciadv.1500558](https://doi.org/10.1126/sciadv.1500558).
- Melo FP, Arroyo-Rodríguez V, Fahrig L, Martínez-Ramos M, Tabarelli M. 2013.** On the hope for biodiversity-friendly tropical landscapes. *Trends in Ecology and Evolution* **28**:462–468 DOI [10.1016/j.tree.2013.01.001](https://doi.org/10.1016/j.tree.2013.01.001).
- Messing RH, Brodeur J. 2018.** Current challenges to the implementation of classical biological control. *BioControl* **63**:1–9 DOI [10.1007/s10526-017-9862-4](https://doi.org/10.1007/s10526-017-9862-4).
- Messing RH, Wright MG. 2006.** Biological control of invasive species: solution or pollution? *Frontiers in Ecology and the Environment* **4**:132–140 DOI [10.1890/1540-9295\(2006\)004\[0132:BCOISS\]2.0.CO;2](https://doi.org/10.1890/1540-9295(2006)004[0132:BCOISS]2.0.CO;2).
- Naranjo SE, Ellsworth PC, Frisvold GB. 2015.** Economic value of biological control in integrated pest management of managed plant systems. *Annual Review of Entomology* **60**:1–25 DOI [10.1146/annurev-ento-010814-020910](https://doi.org/10.1146/annurev-ento-010814-020910).

- Neuenschwander P.** 2001. Biological control of the cassava mealybug in Africa: a review. *Biological Control* 21:214–229 DOI [10.1006/bcon.2001.0937](https://doi.org/10.1006/bcon.2001.0937).
- Neuenschwander P, Hammond WO, Gutierrez AP, Cudjoe AR, Adjakloe R, Baumgärtner JU, Regev U.** 1989. Impact assessment of the biological control of the cassava mealybug, *Phenacoccus manihoti* Matile Ferrero (Hemiptera: Pseudococcidae) by the introduced parasitoid *Epidinocarsis lopezi* (De Santis) (Hymenoptera: Encyrtidae). *Bulletin of Entomological Research* 79:579–594 DOI [10.1017/S0007485300018733](https://doi.org/10.1017/S0007485300018733).
- Oerke EC.** 2006. Crop losses to pests. *The Journal of Agricultural Science* 144:31–43 DOI [10.1017/S0021859605005708](https://doi.org/10.1017/S0021859605005708).
- Oliver TH, Isaac NJ, August TA, Woodcock BA, Roy DB, Bullock JM.** 2015. Declining resilience of ecosystem functions under biodiversity loss. *Nature Communications* 6:Article 10122 DOI [10.1038/ncomms10122](https://doi.org/10.1038/ncomms10122).
- Paini DR, Sheppard AW, Cook DC, De Barro PJ, Worner SP, Thomas MB.** 2016. Global threat to agriculture from invasive species. *Proceedings of the National Academy of Sciences of the United States of America* 113:7575–7579 DOI [10.1073/pnas.1602205113](https://doi.org/10.1073/pnas.1602205113).
- Pinto-Zevallos DM, Pareja M, Ambrogi BG.** 2016. Current knowledge and future research perspectives on cassava (*Manihot esculenta* Crantz) chemical defenses: an agro-ecological view. *Phytochemistry* 130:10–21 DOI [10.1016/j.phytochem.2016.05.013](https://doi.org/10.1016/j.phytochem.2016.05.013).
- Plecas M, Gagic V, Jankovic M, Petrovic-Obradovic O, Kavallieratos NG, Tomanovic Z, Thies C, Tschardt T, Cetkovic A.** 2014. Landscape composition and configuration influence cereal aphid-parasitoid-hyperparasitoid interactions and biological control differentially across years. *Agriculture Ecosystems & Environment* 183:1–10 DOI [10.1016/j.agee.2013.10.016](https://doi.org/10.1016/j.agee.2013.10.016).
- Ragsdale DW, McCornack BP, Venette RC, Potter BD, MacRae IV, Hodgson EW, O'Neal ME, Johnson KD, O'Neil RJ, DiFonzo CD, Hunt TE.** 2007. Economic threshold for soybean aphid (Hemiptera: Aphididae). *Journal of Economic Entomology* 100:1258–1267 DOI [10.1093/jee/100.4.1258](https://doi.org/10.1093/jee/100.4.1258).
- Rojanaridpiched C, Thongnak N, Jeerapong L, Winotai A.** 2013. Rapid response to the accidental introduction of the mealybug, *Phenacoccus manihoti*. In: Anonymous, ed. *Save and grow: cassava. A guide to sustainable production intensification*. Rome: Food and Agriculture Organization of the United Nations, FAO, 81–82.
- Schellhorn NA, Bianchi FJJA, Hsu CL.** 2014. Movement of entomophagous arthropods in agricultural landscapes: links to pest suppression. *Annual Review of Entomology* 59:559–581 DOI [10.1146/annurev-ento-011613-161952](https://doi.org/10.1146/annurev-ento-011613-161952).
- Schreinemachers P, Afari-Sefa V, Heng CH, Dung PTM, Praneetvatakul S, Srinivasan R.** 2015. Safe and sustainable crop protection in Southeast Asia: status, challenges and policy options. *Environmental Science & Policy* 54:357–366 DOI [10.1016/j.envsci.2015.07.017](https://doi.org/10.1016/j.envsci.2015.07.017).
- Sexton JP, Montiel J, Shay JE, Stephens MR, Slatyer RA.** 2017. Evolution of ecological niche breadth. *Annual Review of Ecology, Evolution, and Systematics* 48:183–206 DOI [10.1146/annurev-ecolsys-110316-023003](https://doi.org/10.1146/annurev-ecolsys-110316-023003).

- Snyder WE, Wise DH. 2001. Contrasting trophic cascades generated by a community of generalist predators. *Ecology* **82**:1571–1583  
[DOI 10.1890/0012-9658\(2001\)082\[1571:CTCGBA\]2.0.CO;2](https://doi.org/10.1890/0012-9658(2001)082[1571:CTCGBA]2.0.CO;2).
- Strong DR, Pemberton RW. 2000. Biological control of invading species—risk and reform. *Science* **288**:1969–1970 [DOI 10.1126/science.288.5473.1969](https://doi.org/10.1126/science.288.5473.1969).
- Suckling DM, Sforza RFH. 2014. What magnitude are observed non-target impacts from weed biocontrol? *PLOS ONE* **9**:e84847 [DOI 10.1371/journal.pone.0084847](https://doi.org/10.1371/journal.pone.0084847).
- Thancharoen A, Lankaew S, Moonjuntha P, Wongphanuwat T, Sangtongpraow B, Ngoenklan R, Kittipadakul P, Wyckhuys KAG. 2018. Effective biological control of an invasive mealybug pest enhances root yield in cassava. *Journal of Pest Science* **91**:1199–1211 [DOI 10.1007/s10340-018-1012-y](https://doi.org/10.1007/s10340-018-1012-y).
- Tittonell P, Giller KE. 2013. When yield gaps are poverty traps: the paradigm of ecological intensification in African smallholder agriculture. *Field Crops Research* **143**:76–90 [DOI 10.1016/j.fcr.2012.10.007](https://doi.org/10.1016/j.fcr.2012.10.007).
- Van Driesche R, Hoddle M, Center T. 2008. *Control of pests and weeds by natural enemies*. Malden: Blackwell Publishing Limited, 484.
- Van Lenteren JC. 1980. Evaluation of control capabilities of natural enemies: does art have to become science? *Netherlands Journal of Zoology* **30**:369–381.
- Van Lenteren JC, Bale J, Bigler F, Hokkanen HMT, Loomans AJM. 2006. Assessing risks of releasing exotic biological control agents of arthropod pests. *Annual Review of Entomology* **51**:609–634 [DOI 10.1146/annurev.ento.51.110104.151129](https://doi.org/10.1146/annurev.ento.51.110104.151129).
- Warner KD, Daane KM, Getz CM, Maurano SP, Calderon S, Powers KA. 2011. The decline of public interest agricultural science and the dubious future of crop biological control in California. *Agriculture and Human Values* **28**:483–496  
[DOI 10.1007/s10460-010-9288-4](https://doi.org/10.1007/s10460-010-9288-4).
- Winotai A, Goergen G, Tamò M, Neuenschwander P. 2010. Cassava mealybug has reached Asia. *Biocontrol News and Information* **31**:10N–11N.
- Wyckhuys KAG, Burra DD, Tran DH, Graziosi I, Walter AJ, Nguyen TG, Trong HN, Le BV, Le TTN, Fonte SJ. 2017a. Soil fertility regulates invasive herbivore performance and top-down control in tropical agro-ecosystems of Southeast Asia. *Agriculture, Ecosystems and Environment* **249**:38–49 [DOI 10.1016/j.agee.2017.08.006](https://doi.org/10.1016/j.agee.2017.08.006).
- Wyckhuys KAG, Graziosi I, Burra DD, Walter AJ. 2017b. Phytoplasma infection of a tropical root crop triggers bottom-up cascades by favoring generalist over specialist herbivores. *PLOS ONE* **12**:e0182766 [DOI 10.1371/journal.pone.0182766](https://doi.org/10.1371/journal.pone.0182766).
- Wyckhuys KAG, Rauf A, Ketelaar J. 2015. Parasitoids introduced into Indonesia: part of a region-wide campaign to tackle emerging cassava pests and diseases. *Biocontrol News and Information* **35**:29N–38N.
- Wyckhuys KA, Zhang W, Prager SD, Kramer DB, Delaquis E, Gonzalez CE, Van der Werf W. 2018. Biological control of an invasive pest eases pressures on global commodity markets. *Environmental Research Letters* **13**(9):094005  
[DOI 10.1088/1748-9326/aad8f0](https://doi.org/10.1088/1748-9326/aad8f0).

- Yonow T, Kriticos DJ, Ota N. 2017.** The potential distribution of cassava mealybug (*Phenacoccus manihoti*), a threat to food security for the poor. *PLOS ONE* **12**:e0173265 DOI [10.1371/journal.pone.0173265](https://doi.org/10.1371/journal.pone.0173265).
- You L, Wood-Sichra U, Fritz S, Guo Z, See L, Koo J. 2017.** Spatial Production Allocation Model (SPAM) 2005 v3.2. Available at <http://mapspam.info/data/>.
- Zeddies J, Schaab RP, Neuenschwander P, Herren HR. 2001.** Economics of biological control of cassava mealybug in Africa. *Agricultural Economics* **24**:209–219 DOI [10.1111/j.1574-0862.2001.tb00024.x](https://doi.org/10.1111/j.1574-0862.2001.tb00024.x).